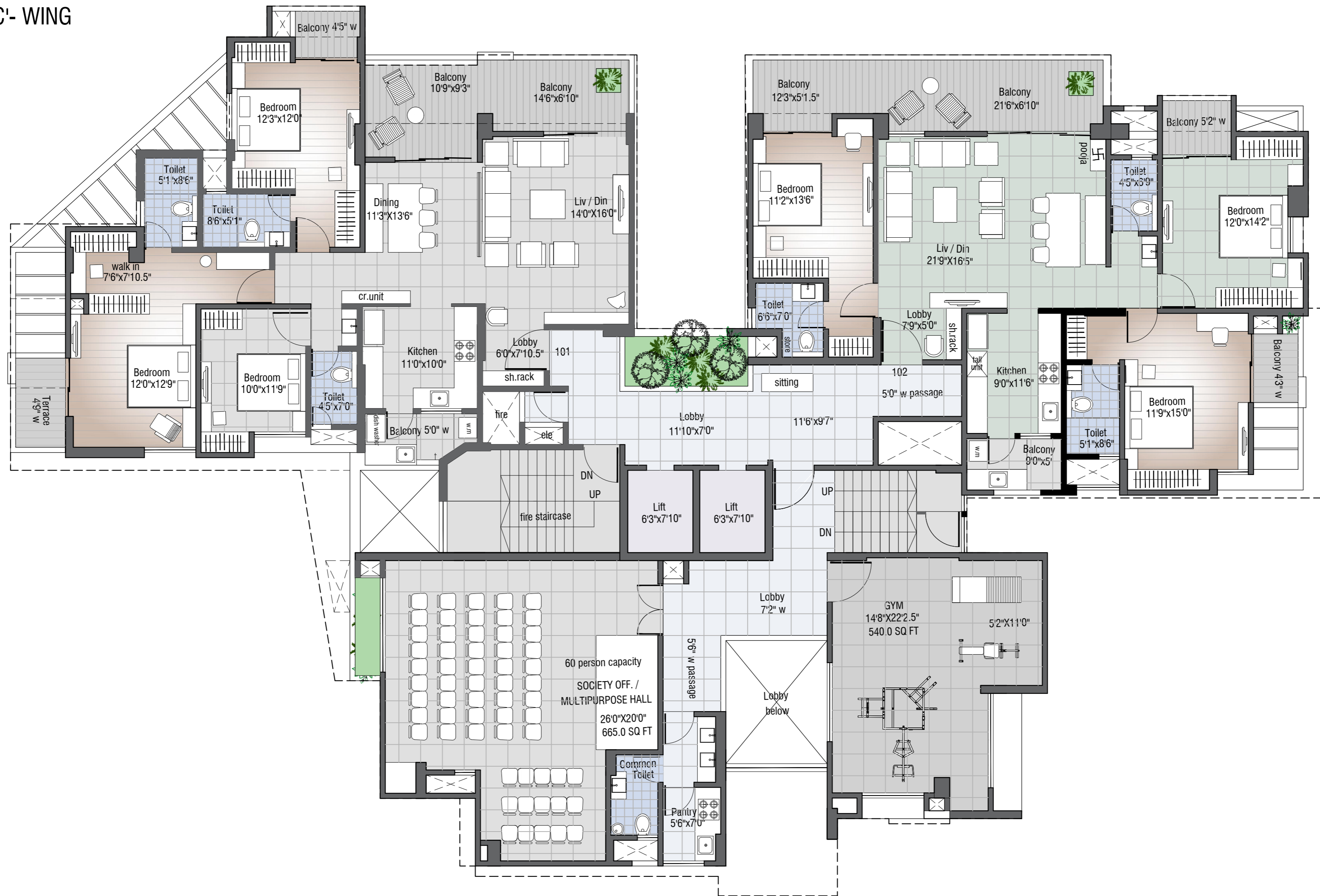


'C'- WING



PROPOSED RESIDENTIAL BUILDING, CLYDE HOMES FOR M/S. VARAD DEVELOPERS THRO  
PARTNER MR. SANJAY CHANDRAKANT CHAVAN.  
SURVEY NO. 209A/1 HISSA NO. 1K/2 & 1K/4 'E' WARD, AT TARABAI PARK, KOLHAPUR.

**FIRST FLOOR PLAN**

