

CLYDE  
HOMES

Pure  
Residential  
Project..

2/3/4 BHK Flats



WelCome  
in Clyde  
Club...  
Come...  
Capture...



WING



Site : 'E' Ward, Near Income Tax Office,  
Tarabai Park, Kolhapur.

A Project By



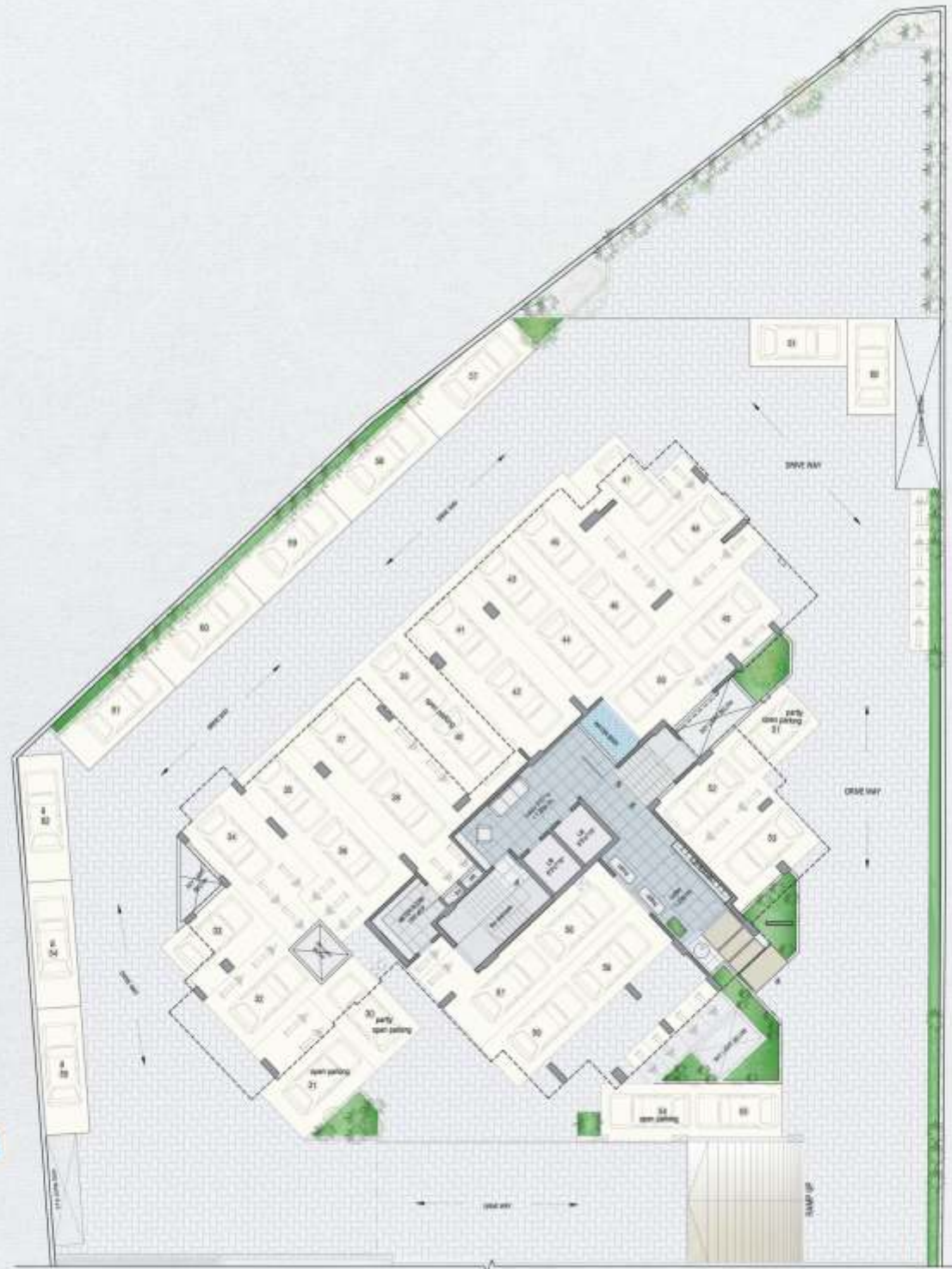
**VARAD**  
Developers

SANJAY CHAVAN



SITE PLAN





PARKING PLAN

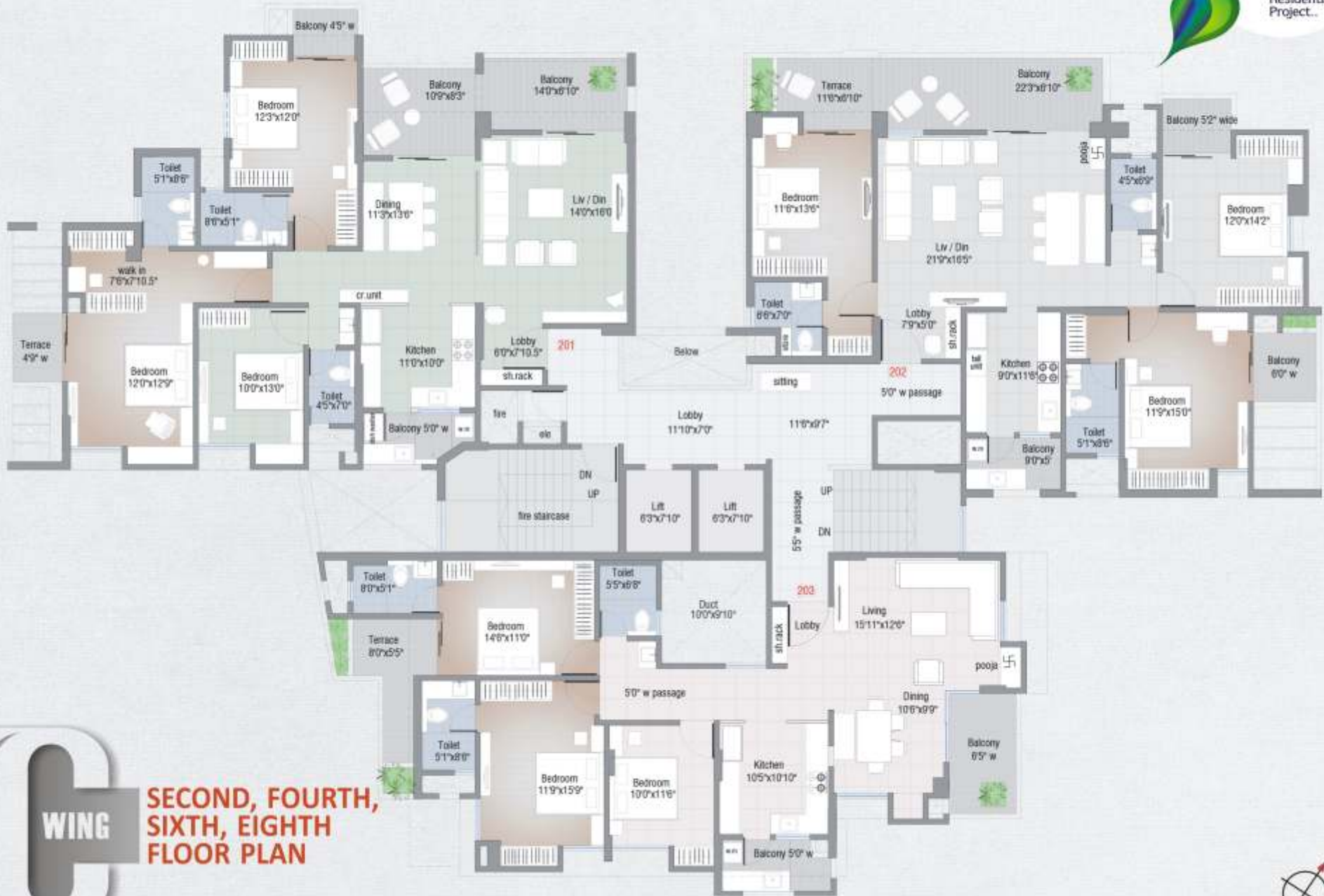




WING

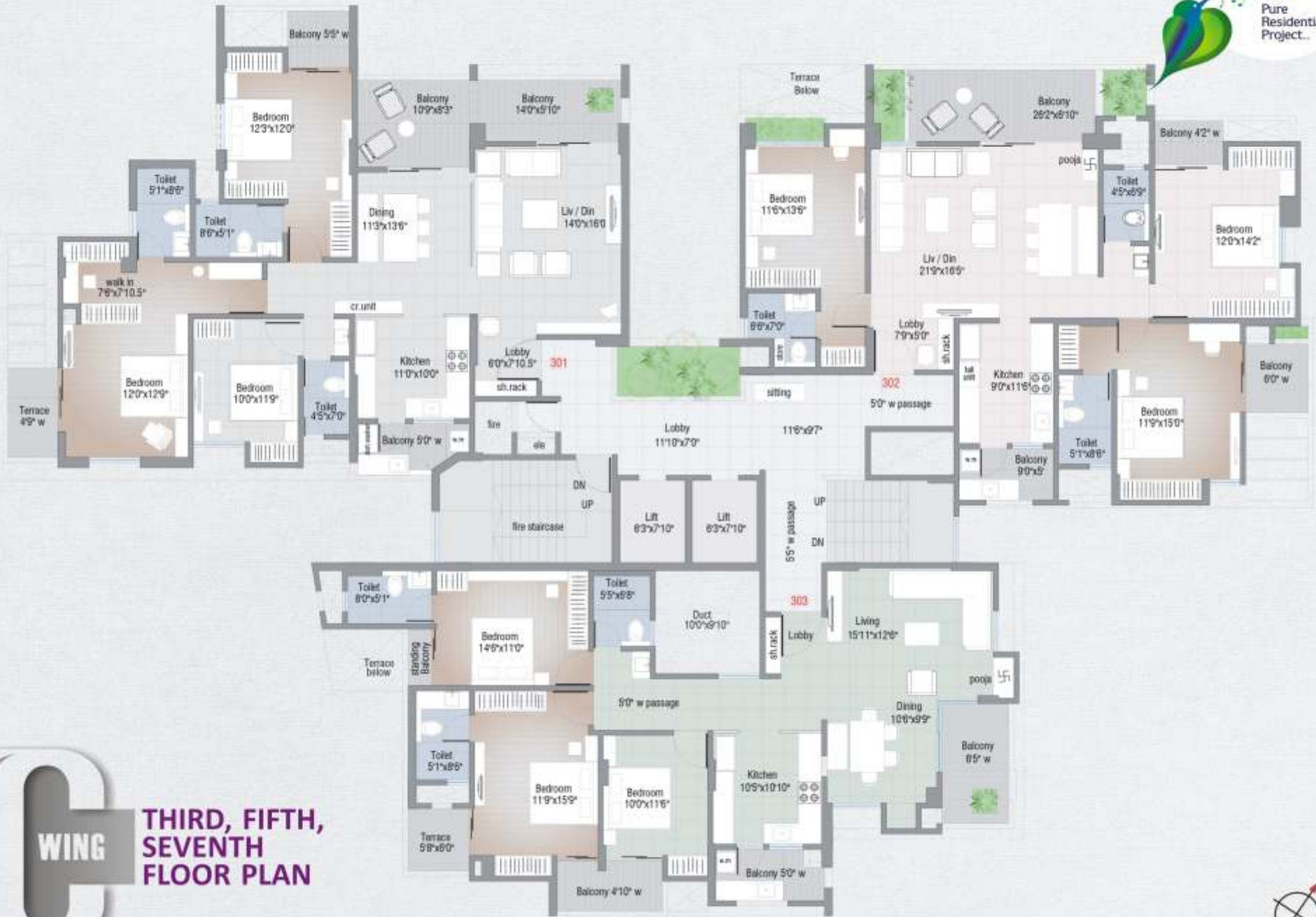
**FIRST FLOOR PLAN**





**SECOND, FOURTH,  
SIXTH, EIGHTH  
FLOOR PLAN**





WING

**THIRD, FIFTH,  
SEVENTH  
FLOOR PLAN**

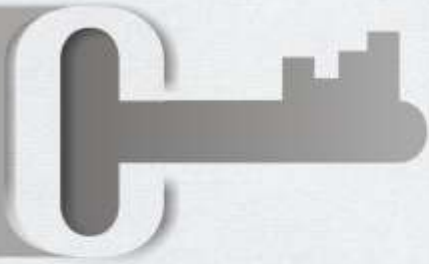




WING

**NINTH FLOOR PLAN**





# Key Highlights

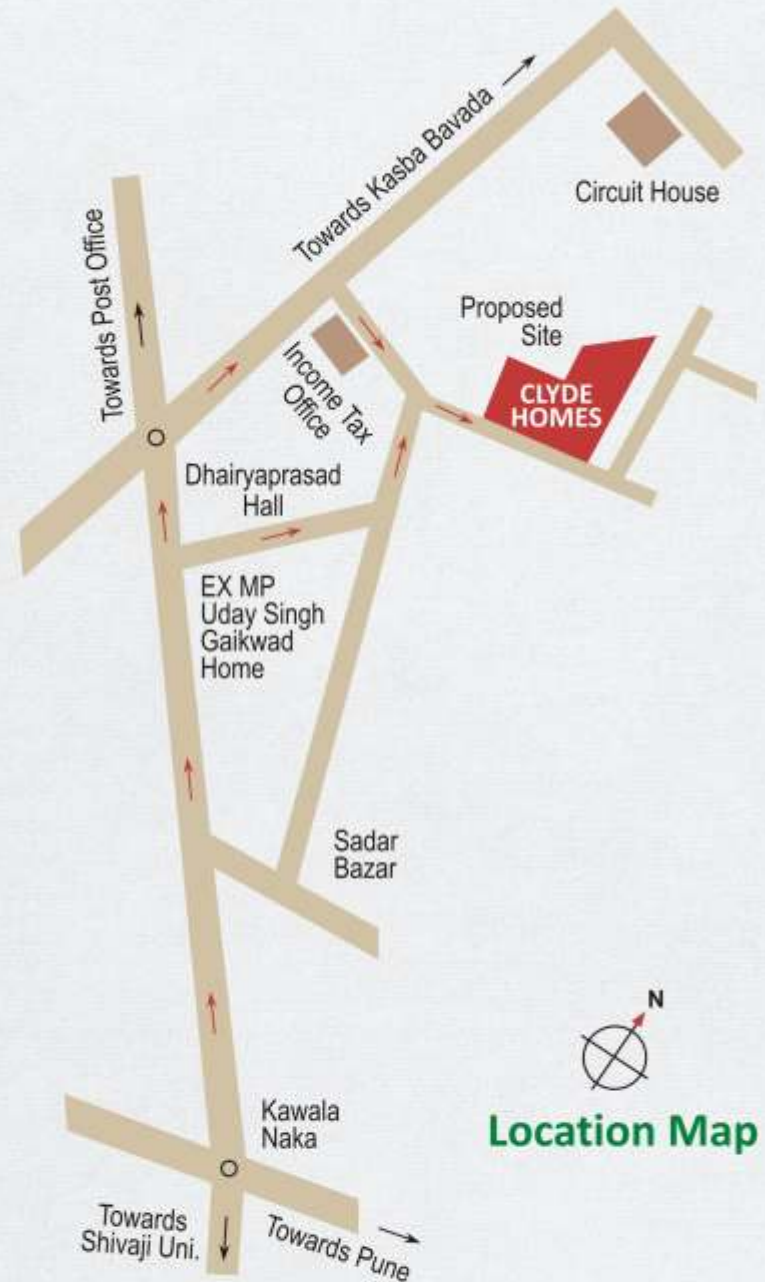
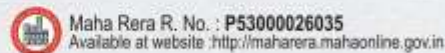
## 'C' Wing

### Amenities

- Delightful Children's Play area.
- Panoramic Landscape.
- Attractive Entrance Gate.
- Battery Backup for Lift.
- Decorative Entrance Lobby with Italian Marble
- Automatic Sensor Lift , 8 Pasanger, Stainless Steel.
- Rainwater Harvesting
- Bore water through the overhead tank & municipal water through seperate overhead water tank for kitchen.
- Security Cabin.
- Solar water system.
- Intercom service facility from security cabin to each flat.
- CCTV Camera & Video Door Phone.
- Open/Covered car parking to each flat.
- Lawn Garden party lawn Basket ball ground.
- Common toilets for servants & Drivers.
- Card entry for Enterance Lobby.



**Office :** Varad Residency, Behind Thorat Gas Agency, Nagala Park, Kolhapur.  
Ph.: +91 95273 47349, 88053 37200, 0231-2650549  
email : varaddevelopers40@yahoo.in  
[www.varaddevelopers.in](http://www.varaddevelopers.in)



Location Map

**BOOK NOW : +91 95273 47349, 88053 37200**